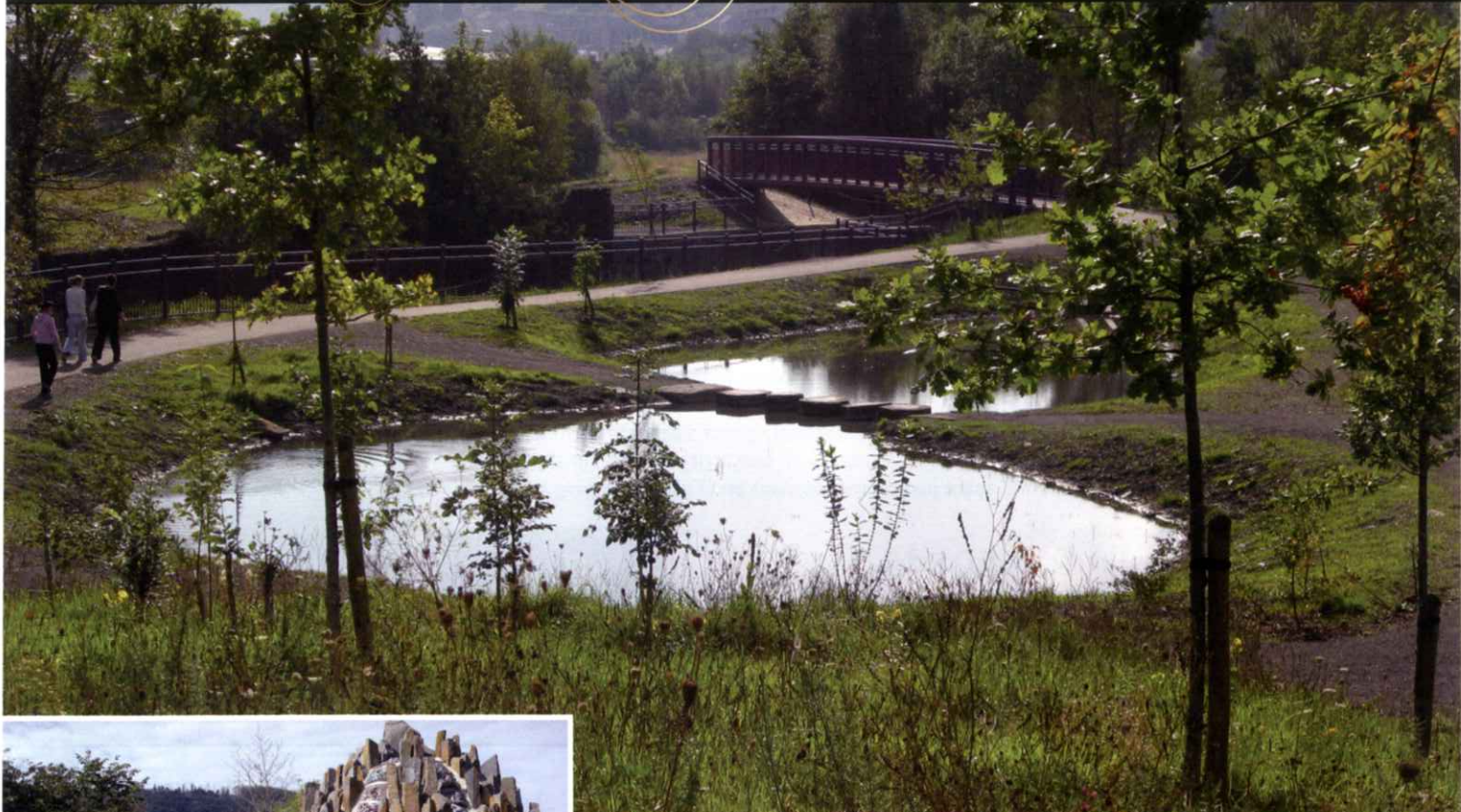


Award Category:  
sponsored by ISS Waterers Landscape

LAND RENEWAL AND  
REGENERATION SCHEME



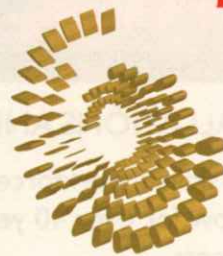
#### JUDGES' COMMENTS

The contractor, through the careful and skilful use of the materials to hand, has succeeded in regenerating a derelict area that would otherwise have continued to blight this community. The result of their work is a valuable and popular public space.



## Landcraft Projects Ltd

### Riverside Park, Mountain Ash, South Wales



BALI National  
Landscape Awards 2008

*Principal Award  
Winner*

This area of derelict land, full of rubbish and abandoned cars, is now safe to visit and acts as a transit route from the railway station to the south eastern part of Mountain Ash. Full use has been made of recycled materials in this well managed regeneration project. Plants and seed gathered on site have been reused and the clever utilisation of existing levels of the old tip material has allowed for the formation of a small amphitheatre and a walking area. Local people have been consulted and involved throughout the project, which should ensure a sense of ownership and reduce the risk of vandalism.

**Winner:** Landcraft Projects Ltd

**Project:** Riverside Park, Mountain Ash, Rhondda Cynon Taff

**Client:** Rhondda Cynon Taff County Borough Council

**Architect:** Haire Landscape Consultants